

# Mykotype

Personal Taxonomy

Organic Serif:  
Dante

Sharp Serif:  
Americana

Straight Serif:  
Serifa

Orgametric:  
Eurostile



### **Mykotype:** *A designer's personal taxonomy*

When facing any design challenge it is crucial that a designer know what type of text is going to be most effective to convey meaning. As a new designer I found myself unfamiliar with most typefaces and their special qualities. With this in mind, I set out to organize and categorize typefaces in a way that fit my personal aesthetic. My taxonomy labels and categorizes typefaces according to their specific aesthetic qualities and structures. If the letterforms share similar serifs, embellishments or interruptions of letterforms, bracketing, or particular uniform shape, they are grouped together and labeled with a name that describes that distinct quality or function. Using this method I have created a taxonomy that allows for quick identification of typefaces via my own interpretation of their functions and look. Instead of learning and subscribing to a historical method of classifying, the Mykotype taxonomy comes straight from my own aesthetic sensibilities, thereby strengthening the classification's meaning and connection to my own critical thinking and problem solving.

---

### *Groups in taxonomy*

Standard Serif

Sharp Serif

Straight Serif

Organic Serif

Standard Sans Serif

Geometric

Orgametric

Traditional Humanist

Neo Typewriter

Heavyface

Historical Humanist

Maladroit

Hollow/Stencil

Handwritten

Gothic

Decorative

Code

## Standard Serif

---

### Description of group

Standard Serifs are the typefaces that collectively share letterforms that are represented by a range of bracketed finishing strokes called serifs.

A **W** B **O** C **r** D **e**

- A Moderate contrast between thick and thin strokes
- B Axis slightly inclined to the left or symmetrical
- C Lightly bracketed serifs
- D Horizontal bar on e

---

### Representative face, fonts, family

Garamond Pro

Regular

*Italic*

**Semibold**

*Semibold Italic*

**Bold**

***Bold Italic***

---

### Faces in group

Aldus

**Bookman**

Bulmer

Caslon 224

**Caslon 3**

Caslon 540

Caslon Pro

Century Expanded

Century Old Style

Fairfield

Fournier

**Garamond**

Garamond 3

Garamond Pro

Galliard

Goudy Modern

Goudy Oldstyle

Janson Text

Jenson Pro

Melior

Minion Pro

New Bakersville

New Caledonia

Palatino

Perpetua

Plantin

Sabon

Stone Informal

Stone Serif

Trump Mediavel

## Sharp Serif

---

### *Description of group*

Named for the signature serifs appearing on these fonts that come to a close at very fine points.

A **W** B **O** C **r**

- A Moderate to extreme contrast between thick and thin strokes
- B Axis is symmetrical vertically
- C Steep and lightly bracketed serifs that close at fine points

---

### *Representative face, fonts, family*

Americana Std

Roman

*Italic*

**Bold**

**Extra Bold**

---

### *Faces in group*

Americana

**Albertus**

**COPPERPLATE GOTHIC**

**ENGRAVERS**

**Friz Quadrata**

## Straight Serif

---

### *Description of group*

Straight Serifs are named for their signature serifs that jut out from the main letterform at ninety degree angles. These faces are unbracketed and include most of the monospaced typefaces.

A **W** B **O** C **r** D **e**

- A Almost no contrast between thick and thin strokes
- B Axis is symmetrical
- C Unbracketed serifs
- D Horizontal bar on e

---

### *Representative face, fonts, family*

#### Serifa

45 Light  
46 *Light Italic*  
55 Roman  
56 *Italic*  
65 **Bold**  
75 **Black**

---

### *Faces in group*

**Bodoni**  
**Claredon**  
**Courier**  
Didot  
Glypha  
Lubalin Graph  
**Memphis**  
**Rockwell**  
Serifa

# Organic Serif

---

## *Description of group*

Named for the unique serifs that protrude from the main letterform with the appearance of something that has grown out of the letter organically. The serifs resemble thorns or plant-like structures. These typefaces often oscillate along traditionally straight forms and invoke a sense of tension on the letterform.

A **D** B **a** C **r** D **g**

- A Variation along top and bottom of letter form
- B Light to moderate contrast of thick and thin lines
- C Organic thorn like serifs
- D Vine like curves in letterform

---

## *Representative face, fonts, family*

Centaur MT Std

Regular

*Italic*

**Bold**

***Bold Italic***

---

## *Faces in group*

Bembo  
Bernhard Modern  
Centaur  
Dante  
Granjon

# Standard Sans Serif

---

## *Description of group*

Characterized by clean, highly legible typefaces that are without serifs. They have little to no stroke variation.

A **W** B **O** C **r** D **e**

- A No serifs
- B Axis is symmetrical
- C Almost no variation in thick and thin lines
- D Horizontal bar on e

---

## *Representative face, fonts, family*

Helvetica

**Extra Compressed**

**Ultra Compressed**

**Compressed**

Light Condensed

*Light Condensed Oblique*

Condensed

*Condensed Oblique*

**Bold Condensed**

***Bold Condensed Oblique***

**Black Condensed**

***Black Condensed Oblique***

Light

*Light Oblique*

Roman

*Oblique*

**Bold**

***Bold Oblique***

**Black**

***Black Oblique***

---

## *Faces in group*

Avant Garde Gothic

**Folio**

**Franklin Gothic**

ITC Franklin Gothic

Frutiger

Gill Sans

Helvetica

**Helvetica Inserat**

Helvetica Neue

**Helvetica Rounded**

Myriad Pro

News Gothic

OCR B

Stone Sans

Trade Gothic

Univers

## Geometric

---

### *Description of group*

Geometric typefaces are characterized by the geometric shapes they contain, or oblique angles at the end of strokes. The letterforms themselves can also be shapes or polygons. Often strokes do not connect to each other.



- A Pentagonal shape inside of the capital A
- B Oblique angle at the end of stroke
- C Rectangles inside letterforms
- D Horizontal crossbars

---

### *Representative face, fonts, family*

## Briem Akademi

Compressed

Semibold Compressed

Bold Compressed

Black Compressed

Condensed

Semibold Condensed

Bold Condensed

Black Condensed

Regular

Semibold

**BOLD**

**Black**

---

### *Faces in group*

Bauhaus

Briem Akademi

*Calcite Pro*

ITC Kabel

Kabel

**MACHINE**

OCR A

ORATOR



# Orgamertic

---

## *Description of group*

Typefaces in this group are a hybrid of organic and geometric faces. They contain irregular shapes that have geometric form but the corners are rounded and organic.

A **b**   B **o**   C **e**

- A Little contrast between thick and thin strokes
- B The rectangular shape in the O has organic corners
- C The E contains both organic and geometric corners

---

## *Representative face, fonts, family*

Eurostile

Condensed

**Bold Condensed**

Medium

*Oblique*

**Demi**

*Demi Oblique*

**Bold**

***Bold Oblique***

Extended 2

**Bold Extended 2**

---

## *Faces in group*

**DIN 1451**

**DIN 30640**

**Eurostile**

**Futura**

## Traditional Humanist

---

### *Description of group*

Sans serif typefaces that utilize oval shapes and thick/thin line variation to create a graceful and human appearance.

A m B O C e

A Drastic contrast between thick and thin strokes

B O's are ovular

C Horizontal bar on e

---

### *Representative face, fonts, family*

Optima

Roman

*Italic*

Medium

*Medium Italic*

Demi

*Demi Italic*

**Bold**

***Bold Italic***

**Black**

***Black Italic***

**Extra Black**

***Extra Black Italic***

---

### *Faces in group*

Eras

Flora

Optima

# Neo Typewriter

---

## *Description of group*

Faces in this group were either made for a new generation of typewriters, such as IBM's Selectric typewriter, or have the appearance of monospaced letterforms without the monospacing.



- A Long bottom stroke on Capital L resembles monospacing
- B Long top stroke on lower case i resembles monospacing
- C No contrast between line widths

---

## *Representative face, fonts, family*

### American Typewriter

Light Condensed

Condensed

**Bold Condensed**

Light

Medium

**Bold**

---

## *Faces in group*

American Typewriter

Letter Gothic

Officina Sans

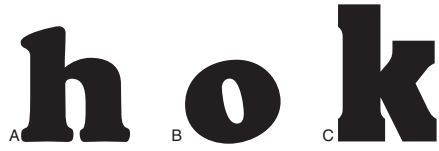
Officina Serif

# Heavyface

---

## *Description of group*

Heavyface typefaces are characterized by their thick bold strokes. These faces are typically set only in a bold font.



A Heavily bracketed serifs

B Very thick strokes

C Serifs do not extend out far from the letterform

---

## *Representative face, fonts, family*

### **Goudy Heavyface**

**Regular**  
***Italic***

---

## *Faces in group*

**Aachen**

**Cooper**

**Goudy**

**Goudy Heavyface**

**Impact**

**Minion**

## Historical Humanist

---

### *Description of group*

Over the course of human history peoples of the world have had distinct forms of writing. There is a distinct difference between the strokes made by Asian cultures and the Roman letterforms chiseled into stone. This group is a showcase of typefaces that reflect historical human made letterforms or strokes, or typefaces that harken to a particular historical age.



- A Reflective of Asian style strokes
- B Roman Letterforms
- C Harkens to the scrawlings of early man
- D Expressive of time before man

---

### *Representative face, fonts, family*

TRAJAN PRO

REGULAR  
BOLD

---

### *Faces in group*

Brioso Pro  
CHARLEMAGNE  
HERCULANIUM  
LITHOS PRO  
**NEULAND**  
POMPEJANA  
TRAJAN PRO

# Maladroit

---

## *Description of group*

Maladroit means ineffective, bumbling, or clumsy. Typefaces in this group tend to be just that. They are eccentric and unique with many odd forms and strokes and don't fit aesthetically into any other group.



The Maladroit group is a range of typefaces which are represented by unique variations in x height, decorative flourishes, and irregular ascenders and descenders

---

## *Representative face, fonts, family*

PEIQNOT

LiGHt  
DEMi  
BoLd

---

## *Faces in group*

ANNA

ArcaDia

Arnold Boecklin

Bernhard

ECCENTRIC

Onyx

PEIQNOT

## Hollow/Stencil

---

### *Description of group*

Typefaces in this group are interrupted in some way. They are either outlines of letterforms or contain negative spaces inside the strokes of the letterform sometimes called in lines.



- A Letterforms are outlines
- B Letterforms appear hand tooled or carved
- C Letterforms are negative space
- D Letterforms are stenciled

---

### *Representative face, fonts, family*

## **Garamond Handtooled**

**Bold**

***Bold Italic***

---

### *Faces in group*

Caslon Open Face

**Garamond Handtooled**

GILL FLORIATED CAPS

Industria

Myriad

**STENCIL**

**UMBRA**

# Handwritten

---

## Description of group

Characterized by fonts that appear to be written by hand. They tend to look calligraphic, brushed, or stroked, and include all the cursive typefaces. These cursive faces can be formal and informal and joined or unjoined.



- A Informal cursive
- B Formal cursive typeface: joined
- C Letter forms often take on their cursive identity
- D Unjoined cursive

---

## Representative face, fonts, family

Zapf Chancery

Light

*Light Italic*

Roman

*Italic*

Demi

**Bold**

---

## Faces in group

*Arcana*

*Banshee*

*Bickham Script*

*Briem Script*

*Brush Script*

*Coronet*

*Ex Ponto*

**FLOOD**

*Mistral*

*Park Avenue*

*Poetica*

Tekton

*Zapf Chancery*



# Gothic

---

## *Description of group*

The typefaces in this group have their origins in manuscript writing, and a distinctly ornate and medieval look. The capital letters are very embellished and decorative and the letterforms always have very distinct serifs.



- A Elaborate capitals
- B Drastic contrast between thick and thin lines
- C Unique serifs

---

## *Representative face, fonts, family*

All typefaces in this family have only one font, with the exception of Notre Dame which has ornaments.

---

## *Faces in group*

Clairvaux

**Fette Fraktur**

Goudy Text

Notre Dame

Wilhelm Klingspor Gotisch

## Decorative

---

### *Description of group*

Decorative typefaces are novelty faces that contain letterforms that are composed of representative shapes, such as those of creatures or human forms, or are entirely without a typifying form. They do not contain any fonts other than their standard.

---

### *Faces in group*

ORLANDER  
CRITTER  
CUTOUT  
MYTHOS

# Code

## Description of group

This group is composed of typefaces that are predominately symbols or numbers.

## Faces in group

Adobe wood type ornaments



N A T I O N A L C D E P

Astrology Pi



Audio Pi



Border Pi



Decoration Pi



European Pi



Game Pi



Holiday Pi



MICR



Sonata



Warning Pi



Zapf Dingbats



